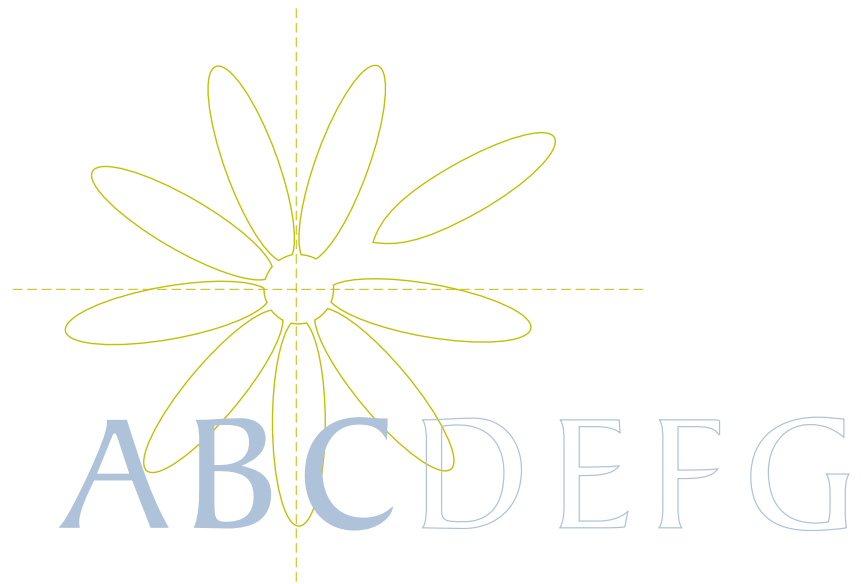


GENERAL CATALOGUE

1 - 2	INTRODUCTION
3 - 4	FACIAL CLEANSING
4	TONERS
5 - 6	MASKS
7 - 8	SKIN TYPES CHART
9	DEHYDRATED SKIN LINE
10	ALIPIC SKIN LINE
11	OILY SKIN LINE
12	COMBINATION SKIN LINE (BALANCE)
13	SENSITIVE SKIN LINE
14	FLACCID SKIN LINE
15	ALL SKIN TYPE LINE
16	PUR-SKIN LINE (ACNE)
17	RE-VITAL LINE (VITAMINS FOR FINE, AGED AND WRINKLED SKIN)
18	NATURAL WHITE LINE (LIGHTENING)
19	TOP CELL LINE (CYTOKYNES, ISOFLAVONES AND ARGIRELINE® FOR MATURE SKIN)
20	OXYGEN LINE (PREMATURELY AGED, DEHYDRATED AND/OR ASPHYXIATED SKIN)
21	VIVRECEL LINE (FRESH CELLS FOR STRESSED/FATIGUED SKIN)
22	GLYCOFRUIT LINE (CELL RENEWAL WITH HYDROXYACIDS-ENZYMATIC PEELING)
23	ONLY MEN LINE (CARE AND COMFORT FOR MAN'S SKIN)
24	PRIVILÈGE LINE (ANTI-AGE LUXURY TREATMENT)
25 - 26	SOLAR LINE: ALGA SUN "REPAIR & PROTECTION & VITAMINS"
27 - 28	MODELLING LINE (BODYCELL I)
29 - 30	BODY FIRMING LINE (BODYTENS 3) AND ANTI-STRETCH MARKS (9)
31 - 34	SPA LINE (4)
35	ANTI-FATIGUE LINE (5)
36	HAIR REMOVAL LINE (10)
37	BASIC BODY CARE (11)
38	DEPIL CARE LINE (LASER DEPILATION)
39	SPECIAL PRODUCTS (RETAIL SALE PACKS AND AESTHETICPUNCTURE)
40	COMPLEMENTS



From nature, we pick up a flower and choose a petal - the synthesis of wisdom and beauty. A human gesture that we include in our image, as the link between man and nature.



Tipografia: Baker Signet



**Pantone
383**

Meadow
Green



The petal, and by extension our flower, is our direct contact with plant nature (colour green).



The sea, source of life, will be represented by the colour blue.

**Pantone
2955**

Marine
Blue


BELNATUR
COSMETICA NATURAL

Two colours, two elements, the flower and a stylised typography for a renewed logo that bring us even closer to our origins in the search for what is natural.



FACIAL CLEANSING

BELNATUR cleansers contain various plant extracts that provide a daily vitalising contribution, while they moisturise and soften the complexion.



■ All skin type

DERBAFLOR. A creamy emulsion specially formulated to remove make-up and cleanse all types of skin and especially dry and sensitive skin. Rich in Marigold, Camomile, and Linden extracts which soothe and refresh the complexion.

Presentation: 17.6 oz. - 500 ml and 8.8 oz. - 250 ml flasks

BROSSAGE. A neutral foaming gel which cleanses the skin in-depth, without making it dry or altering its pH.

Presentation: 16.9 U.S. fl. oz. - 500 ml and 8.5 U.S. fl. oz. - 250 ml flasks

NOVA. Exfoliating gel with Jojoba micro-particles, that gently removes skin dead cells and impurities.

Presentation: 7 oz. - 200 ml and 2.6 oz. - 75 ml tubes

GOMMAGE. Gentle peeling, based on milk derivatives (Casein).

Presentation: 8.8 oz. - 250 ml flask

DESMAQUILLADOR DE OJOS (EYE MAKE-UP REMOVER). Oil-free lotion whose formula, based on coconut oil, allows a gentle and efficient make-up removal of lids and lashes.

Presentation: 4.2 U.S. fl. oz. - 125 ml flask

DUO FACE. A two-phase solution for a complete make-up removal of face, eyes and lips. It eliminates all kinds of make-up, including water resistant or long-lasting types, leaving skin completely moisturised. Fragrance free.

Presentation: 200 ml mist-spray flask



TONERS

Naturally scented lotions based on **PLANT, FLOWER AND FRUIT EXTRACTS**, to tone, moisturise and soften the complexion.

■ Oily skin

HERBAL. Purifying and astringent lotion. Contains Gentian, Witch Hazel, Sage, Marigold, Camomile and Rose extracts.

Presentation: 16.9 U.S. fl. oz. - 500 ml and 8.5 U.S. fl. oz. - 250 ml flasks

■ All skin type

MARINA. A powerful moisturising and soothing lotion for all skin type, included the most sensitive ones. The seaweed it contains restores minerals and purifies the skin. The flower extracts of Camomile, Linden, Marigold, Cornflower, Roses and so on, have a dermo-protective and desensitising effect.

Presentation: 16.9 U.S. fl. oz. - 500 ml and 8.5 U.S. fl. oz. - 250 ml flasks

MASKS

Masks constitute the final treatment. They enhance the penetration of active ingredients previously applied, while tightening pores and supplying new actives that bring a touch of luminosity to the skin.

■ Sensitive skin

SEDAMASK. A refreshing decongestant and soothing mask, which can be applied on all skin types and that is ideal for highly sensitive ones. It quickly eliminates any sensation of irritation or itching.

Presentation: 7 oz. - 200 ml and 2.6 oz. - 75 ml tubes

■ Cleansing

FITOMASK. A gentle cleansing mask for all skin types, particularly recommended for oily skin. It contains micro-nised Laminaria Algae, Witch hazel, Marigold, Arnica and Yeast extracts and Sage, Cypress, Lemongrass and Marjoram essential oils. Cleanses in-depth, gradually eliminates blackheads and softens the skin.

Presentation: 7 oz.- 200 ml and 2.6 oz. - 75 ml tubes

■ Surface dehydrated skin (immediate effect): NATURDERMIE hydro-plastic masks.

A range of highly moisturising masks made of Alginates, Diatomaceous earth and selected Plant extracts that confer their particular effects to each mask.

NATURDERMIE SENSITIVE. Mask with decongestive, moisturising and emollient properties. It is particularly recommended for sensitive or irritated skin. It contains Aloe Vera, Oat Flour, Horse Chestnut and Rose Petals

Presentation: 7 oz - 200 g jar, for 8 applications

NATURDERMIE SP FIRM. Moisturising, tightening and revitalising mask. It is recommended for face and body treatments. It contains Spirulina algae and Sage essential oil.

Presentation: 7 oz - 200 g jar, for 8 facial applications

NATURDERMIE RE-VITAL. Moisturising, repairing, anti-oxidant, lightening and anti-wrinkles mask. It is especially targeted for devitalized skin. It contains Acerola, Beta-Carotene (Pro-vitamin A), Green Tea, a Complex of Bioflavonoids obtained from Orange, Lemon and Grapefruit, Lemongrass essential oil and Olive Leaves

Presentation: 7 oz - 200 g jar, for 8 applications

NATURDERMIE EYE COMFORT. A moisturising, soothing and decongestive mask, especially targeted for the eye area care. It contains Camomile, Green Tea, Horse Chestnut and Mallow Flowers.

Presentation: 7 oz - 200 g jar, for 16 applications

NATURDERMIE LOTION. A moisturising lotion for the preparation of the NATURDERMIE masks. It contains Calmiskin®, an extract obtained from Mint leaves, which boosts the release of endorphins.

Presentation: 16.9 U.S. fl. oz. - 500 ml flask



■ In-depth dehydrated skin (long term effects) + Regenerating action

VELO DE COLÁGENO (COLLAGEN VEIL). A mask formed by pure collagen fibres, which constitute a reproduction of cutaneous con-junctive tissue (second skin).

Acts as a CUTANEOUS BIO-CATALYSER with multiple effects:

1- Cutaneous rehydration. 2- Anti-aging effect. 3- Absorption and normalisation of excess sebum. 4- Normalisation of the hydrolipidic layer. 5- Moisturising, firming and regenerative effects. 6- Provides softness and reduces superficial irregularities of the skin. 7- Encourages the effects of active ingredients used in the treatment.

Presentation: Box with 5 units packed individually

■ Other masks

VIVRECEL LIFT MASQUE. Fatigued skin (See page 21)

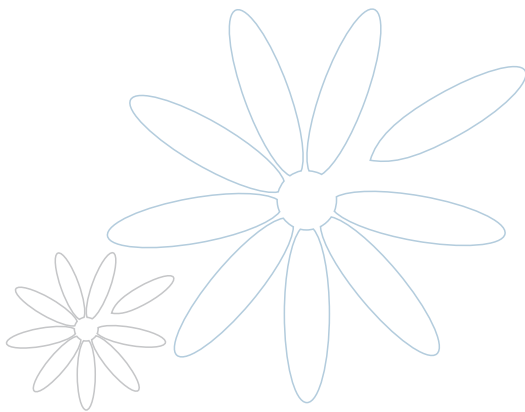
BLACK MASK. Devitalised skin (See page 31)

NATURAL WHITE MASCARILLA. Skin with blemishes (See page 18)

PUR-SKIN MASK. Prone to acne skin (See page 16)

TOP CELL MASK. Mature skin (See page 19)

OXYGEN MASK. Prematurely aged, dehydrated (See page 20)
and/or asphyxiated skin



SKIN TYPES	MOTIVE
DEHYDRATED	Disappearance of moisture in the epidermis.
DRY ALIPIC	Shortage of lipids in the epicutaneous layer.
OILY	An excessive sebum production.
COMBINATION	Unbalance in sebum production and in the maintenance of the moisture level.
SENSITIVE	Irritation and sensitiveness reactions.
FLACCID	Deterioration of the dermis fundamental proteins.
HYPERSEBORRHEIC (ACNE)	Follicular obstruction and hyperkeratinisation. Inflammation and bacterial proliferation.
FINE, AGED AND WRINKLED	Hormonal disorders, environmental aggressions.
MATURE / WRINKLED	Slowing down of cell functions due to the age.
PREMATURELY AGED, DEHYDRATED AND/OR ASPHYXIATED	Effect of external factors (sun, poor food intake, tobacco, etc).
STRESSED/FATIGUED	Tired skin due to stress and fatigue.

APPEARANCE	TREATMENT
Matte, rigid and stiff. Rough.	DEHYDRATED SKIN
Little lubrication, cracked and scaly.	DRY ALIPIC SKIN
Shiny and oily complexion. Enlarged pores.	OILY SKIN
Shiny appearance of the "T" zone (forehead, nose and chin). Dryness and wrinkles on the rest of the skin.	BALANCE
Irritated and reddened skin.	SENSITIVE SKIN
Slack skin.	FLACCID SKIN
Appearance of papules, pustules, inflammations and redness.	PUR-SKIN
Fine, dull and wrinkled skin.	RE - VITAL
Mature and/or wrinkled skin.	TOP CELL / PRIVILÈGE
Prematurely wrinkled, dull skin.	OXYGEN
Devitalised, lifeless skin.	VIVRECEL

DEHYDRATED SKIN LINE

Dehydration of the skin is a natural phenomenon that worsens with age, and with the action of various external factors that cause skin to lose its suppleness and become fragile. Dehydrated skin is in turn divided into two types, surface and in-depth dehydration.

Belnatur's dehydrated skin line restores and ensures the skin water content, improving cellular cohesion. Its use leads to the disappearance of small wrinkles and increases softness and luminosity.

■ DEHYDRATED SKIN LINE COMPOSITION

ULTRA-COLAGENO. Pure, lyophilised Collagen for mixing with Fitosolvente ampoules. A shock treatment. Collagen represents approximately 30% of human proteins, and is responsible for the skin's condition and appearance. Specially recommended for mature skin.

Presentation: Box of 10 vials with 0.02 oz.-0.5 g of Collagen and 10 ampoules with 0.1 U.S. fl. oz. - 3 ml of Fitosolvente

BELSOGEL. A pleasant and finely textured cream-gel with moisturising Liposomes, Royal jelly, and Vitamin E. Fragrance free.

Presentation: 1.8 oz. - 50 ml jar

FITOALOE. A revitalising and moisturising cream recommended for dry and mature skin types. Contains Marine Collagen, Aloe Vera, Natural Moisturising Factor, Witch Hazel, Camomile and Marigold extracts and Vegetable Oils rich in Vitamins A, E and F. Contains Sun Filter.

Presentation: 7 oz. - 200 ml and 1.8 oz. - 50 ml tubes

HYDRODERMA. A moisturising fluid cream, highly concentrated in Aloe Vera and in Natural Moisturizing Factor, which provide the required degree of moisture to prevent the skin from drying out.

Presentation: 1.8 oz - 50 ml tube



ALIPIC DRY SKIN LINE

When the skin's lipid content is low, it becomes dry and loses its elasticity.

ALIPIC DRY SKIN or a "lacking in oil" skin. In this skin type, the amount of oily components in the hydrolipidic layer is drastically reduced, and its water retentive capacity along with it.

This skin has little lubrication and suffers from cracking and scaling.

The **BELNATUR** alipic skin line balances the skin's lipid content, making it supple and soft.

The products that compose this line are characterised by their high content in oils similar to the skin's own, which fuse with the hydrolipidic layer, restoring its functions as an anti-dehydrating and protective barrier.

■ ALIPIC DRY SKIN LINE COMPOSITION

BIO TURGENS. Concentrated plankton extract for shock treatments. It achieves a visible skin improvement in a short time period. It is recommended during the change of seasons, for dry and devitalised skin.

Presentation: Box of 2 U.S. fl. oz. (20 x 0.1 U.S. fl. oz.) - 60 ml (20 x 3 ml) ampoules

PLUS. Nourishing and regenerative cream which helps to maintain the elasticity and flexibility of the skin and prevents from premature wrinkles. Contains plant Squalane and Ceramides, Jojoba and Macadamia oils, Shea Butter, Oxygenating and Anti-irritating active obtained from corn oil, Marine Collagen and Elastin. For dry, alipic and flaccid skin types.

Presentation: 7 oz. - 200 ml and 1.8 oz. - 50 ml tubes

BIOTURGIN PLUS. Anti-wrinkle treatment for the eye area, specifically formulated against crow's feet. Nourishes and vitalises, making tissues smooth and elastic. It contains Jojoba Oil, Karite Butter, Marine Elastin and Hops, Horsetail, and Rosemary Extracts. It contains sun protection.

Presentation: 1 oz. - 30 ml dispensing flask



OILY SKIN LINE

When there's an excessive increase in sebaceous secretions, skin becomes oily and shiny. Oily skin is more prone to looking tired and having greater epidermal thickness. It can be yellowish with boils, enlarged pores, blackheads and acne.

BELNATUR's oily skin line balances the skin's lipid content, making it look natural.

■ OILY SKIN LINE COMPOSITION

HYDROPLANT. Moisturising-normalising and light texture cream for oily skin. It contains Absorbent Microsponges for excessive oiliness, Balancing Extracts (Burdock, Witch hazel, Zinc salt) and moisturising and softening active agents (Aloe Vera and Natural Moisturizing Factor).

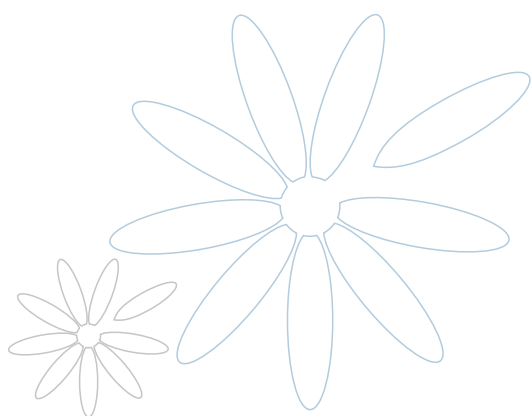
Presentation: 7 oz. - 200 ml and 1.8 oz. - 50 ml tubes

STIMULS. Nourishing-normalising cream for oily and mature skin. Helps to control the excessive sebaceous secretion and stimulates the renewal and natural defence mechanisms of the skin. Contains absorbing Microsponges, Laminaria saccharina Algae extracts, Witch hazel, Centella Asiatica, Ginseng, Marine Collagen and Plankton and Soy Proteins.

Presentation: 1.8 oz. - 50 ml jar

■ Other products for oily skin

HERBAL.	Toner.	(See page 4)
FITOMASK.	Mask.	(See page 5)
PUR-SKIN BIOCOMPLEX.	Ampoules.	(See page 16)



COMBINATION SKIN LINE “BALANCE”

Ideal skin is fine to the touch, soft, flexible, smooth and perfectly lubricated.

Its natural protective layer has a balanced pH of 5.4.

The usual complexion is the combination one, which presents the mixture of oil and dry zones. Combination skin is characterised by an oily forehead, nose and chin, otherwise known as the T-zone. The sides (cheeks, the area around the eyes and the neck) are usually dry and lacking in moisture.

BALANCE line equilibrates the pH of the skin, absorbs the skin's excess oil and keeps the complexion shine-free.

■ COMBINATION SKIN LINE COMPOSITION

BIO BALANCE. Balancing concentrate for combination and oily skin. Balances the skin's pH, regulates excess sebum secretion and moisturises dry zones.

Presentation: Box of 2 U.S. fl. oz. (20 x 0.1 U.S. fl. oz.) - 60 ml (20 x 3 ml) ampoules

BALANCE CREAM. Moisturising cream with Laminaria saccharina (balances the skin's pH and regulates excess sebum secretion), Mattifying micro-sponges (absorb oil excess and leave a long lasting mat result), Mucopolysaccharides and Carbohydrates (moisturise), Fucose gel and Panthenol (anti-irritants and softeners) and Sun filter.

Presentation: 7 oz. - 200 ml and 1.8 oz. - 50 ml tubes

BALANCE GEL (especially for the T-zone). Extra-mattifying gel with immediate results, that maintains the mat appearance of the skin in the T-zone (forehead, nose and chin) for longer. Contains Laminaria saccharina algae extract, Mattifying micro-sponges, Witch hazel (astringent) and Salicylic acid (antiseptic, prevents bacterial proliferation and sebaceous encystment).

Presentation: 1 oz. - 30 ml dispensing flask



SENSITIVE SKIN LINE

A line specially formulated for the protection of sensitive and irritable skin, both young and mature. Contains dermoprotective, desensitising PLANT and MARINE extracts which, in combination with SPD (a marine molecule of exceptional anti-free radical properties), reinforce the skin's natural defences, creating a protective barrier against the destructive effect of free radicals (responsible for premature ageing) and the constant irritation caused by aggressive environmental factors.

■ SENSITIVE SKIN LINE COMPOSITION

BIO SENSIL. A concentrate with Marigold, Camomile, Linden, Cornflower, Kola Nut, Butcher's Broom, Horse Chestnut and Rose extracts, specially formulated to alleviate skin irritation and itching produced by:

- Aggressive manipulation of the skin (extraction of blackheads, hair removal, etc.)
- Sudden temperature changes.
- Chemical atmospheric pollutants.

Strengthens the walls of superficial capillaries and improves their elasticity, which also recommends it for skin with couperose.

Presentation: Box of 2 U.S. fl. oz. (20 x 0.1 U.S. fl. oz.) - 60 ml (20 x 3 ml) ampoules

HYDROMAR BASIC. Highly protective moisturising and softening gel cream. It is recommended for all types of sensitive skin. Fragrance free.

Presentation: 5.3 oz - 150 ml tube and 1.8 oz - 50 ml jar

HYDROMAR ACTIV. Nourishing protective cream for sensitive, dry or mature skin types.

Presentation: 1.8 oz - 50 ml jar

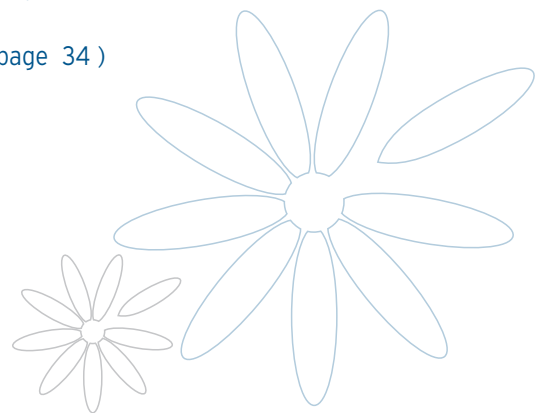
■ Other products for sensitive skin

MARINA. Toner. (See page 4)

SEDAMASK. Mask. (See page 5)

NATURDERMIE SENSITIVE. Hydroplastic mask (See page 5)

ESENCIA ROJA. Essential oils. (See page 34)



FLACCID SKIN LINE

When the fundamental proteins in the dermis (collagen, elastin and reticulin) deteriorate, they cause the dermis to collapse leading to slackness of the skin.

The components of this line help to recover the lost elasticity and firmness.

■ FLACCID SKIN LINE COMPOSITION

ULTRA ELASTINA. Shock treatment for mature skin. The Elastin supply will compensate its progressive loss in the tissues, and encourage the formation of new elastic fibres.

Presentation: Box of 10 vials with 0.01 oz.- 0.3 g of Elastin and 10 ampoules with 0.1 U.S. fl. oz. - 3 ml of Fitosolvente

FLORALASTINA COMPLEX. An active complex based on Elastin and Soy Proteins (a vegetal replica of placenta extracts). Highly nourishing to activate cell regeneration in toneless and devitalised skin and improve their firmness and general appearance.

Presentation: Box of 2 U.S. fl. oz. (20 x 0.1 U.S. fl. oz.) - 60 ml (20 x 3 ml) ampoules

TENS. Cream for throat and cleavage with tensing and firming effects which is rich in proteins obtained from Wheat and Soy.

Presentation: 1.8 oz. - 50 ml tube

FIRMALIA. Softly textured cream specially created for tensing and firming the facial oval, based on plant extracts and proteins. Contains Sun Filter. For all skin types.

Presentation: 7 oz. - 200 ml and 1.8 oz. - 50 ml tubes

■ Other products for flaccid skin

NATURDERMIE SP FIRM. Hydroplastic mask. (See page 5)

ESENCIA ORO. Essential oils. (See page 34)



ALL SKIN TYPE LINE

This line includes those products, whose activity is multiple or whose special characteristics make them applicable for all skin type.

■ Multi-action products

EQUILIBRANTE FACIAL. An active concentrate with multiple functions. Firms, vitalises and moisturises skin, preventing the loss of its natural humidity, protects it from the effects of irritating environmental agents, helping to prevent premature wrinkle formation and smoothing away already existing ones.

Presentation: Box of 2 U.S. fl. oz. (20 x 0.1 U.S. fl. oz.) - 60 ml (20 x 3 ml) ampoules

BIODERMIN. Nourishing, regenerating and firming cream for all skin types. Quickly absorbed, it contains Marine Elastin and Collagen, Vitamin E and Horsetail, Centella asiatica, Camomile, Marigold and Linden Extracts. Contains sun protection factor (10).

Presentation: 7 oz. - 200 ml and 1.8 oz. - 50 ml tubes

■ Flash Effect (instant beauty)

BIO LIFTING ECLAT. An instant beauty product recommended for all types of facial skin. Provides an immediate tensing and softening effect. It also acts on the deepest levels, improving the skin firmness. Contains Plant Tensor, Plant Firmer and Marine Elastin and Collagen. It increases the complexion glow, smoothes skin surface and sets make-up.

Presentation: 0.2 U.S. fl. oz. - 6 ml dispensing flask

■ Tinted moisturisers

HYDRO SPORT DORÉ. Tinted moisturising creams which moisturise and soften the skin, giving it a slight touch of colour. Contain Silk proteins, Aloe Vera, Witch Hazel, Camomile, Vitamin E, Panthenol, Bisabolol and Sun Filter.

Presentation: 1.8 oz. - 50 ml tubes

HYDRO SPORT BLOCK 25. Non oily moisturising cream with a high sun protection factor. It contains Silk proteins, Aloe Vera, Witch Hazel, Camomile, Vitamin E, Panthenol, Bisabolol, mattifying sponges and a slight touch of colour which give the skin a matt and natural appearance.

Presentation: 1.8 oz. - 50 ml tube



PUR-SKIN LINE

TREATMENT FOR SKIN WITH ACNE

Acne begins by an excessive secretion of the sebaceous glands of the hair follicle.

Excess sebum promotes bacteria proliferation, which produce an additional inflammatory process, and also stimulates hyperkeratinization and the subsequent blockage of the hair follicle.

As a result, comedones, pustules, nodules and cysts appear on the skin.

PUR-SKIN balances and regulates excessive sebaceous secretion and restores the hygienic condition of the skin, while respecting its natural ecosystem

■ PUR-SKIN LINE COMPOSITION

PUR-SKIN CREAM. Moisturizing light and fresh cream, which helps to normalize skin functions, balance its natural ecosystem and maintain it in good hygienic conditions. It contains Acnacidol®, Magnolia, Grapefruit and Green Tea extracts, Bioecolia®, Vitamin B3 and mattifying Micro-sponges. Presentation: 7 oz. - 200 ml and 1.8 oz - 50 ml tubes

PUR-SKIN MASK. Purifying and refreshing mask that absorbs excessive oiliness and impurities, soothes irritations and reduces redness. It contains White Clay, Salicylic acid, Zinc, Aloe Vera, Magnolia, Grapefruit, Green Tea and Acnacidol®. Presentation: 7 oz. - 200 ml and 2.6 oz - 75 ml tubes

PUR-SKIN BIOCOMPLEX. Treatment ampoule made on a basis of Aloe Vera, with Acnacidol®, Bio Ecolia®, Magnolia, Grapefruit and Green Tea extracts, B3 and B5 Vitamins, Zinc derivative and essential oils of Lavender and Rosemary. Presentation: Box of 2 U.S. fl. oz. (20 x 0.1 U.S. fl. oz.) - 60 ml (20 x 3 ml) ampoules (PROFESSIONAL USE ONLY)

PUR-SKIN CLEANSER. Gel for the in-depth cleansing of oily skin. It contains soft and not aggressive cleansers, Salicylic acid that removes dead cells and impurities and cleanses the pores, together with Acnacidol® and Magnolia, Grapefruit and Green Tea extracts that help to prevent sebum build up and the appearance of impurities. It leaves the skin feeling fresh and smooth. Presentation: 7 oz. - 200 ml tube

PUR-SKIN COVER. Corrective coloured treatment cream, that helps conceal and progressively diminish redness and imperfections that are common of this type of skin. It contains a plant complex that purifies the skin and controls the excess of grease, Bioecolia® and liquorice extract. Presentation: 0.5 oz. - 15 ml tube

PUR-SKIN INSTANT. Corrective and drying lotion with plant extracts and Melaleuca (Tea tree) essential oil. Presentation: 0.3 U.S. fl. oz. - 9 ml Roll-on stick

PUR-SKIN SOAP. Purifying, moisturizing and regenerating soap, specially recommended for the cleansing of oily skin. Suitable for face and body. It removes dead cells and impurities from the skin surface. It contains Oat bran, with a soft exfoliating effect, Aloe vera and Lemon essential oil. Presentation: 4.4 oz - 125 g bar

■ Other products for skin with acne

HERBAL. Toner. (See page 4)



RE-VITAL multivitamin LINE A+C+E+B

REGENERATING AND RESTRUCTURING LINE FOR FINE, AGED AND WRINKLED SKINS

Vitamins are vital for keeping the skin balanced. Today's lifestyle makes essential a supplementary intake of vitamins to restore vital processes and encourage cell renewal to prevent premature ageing of the skin.

Re-Vital line provides the vitamins that the skin requires.

■ RE-VITAL LINE COMPOSITION

RE-VITAL A+E. A professional use product indicated for skin that is fine, wrinkled, very dry, keratinised, rough or with skin marks. Activates the natural regeneration of epithelial cells and improves the water retentive capacity of the epicutaneous mantle, reducing existent wrinkles.

Presentation: Box of 2 U.S. fl. oz. (20 x 0.1 U.S. fl. oz.) - 60 ml (20 x 3 ml) ampoules

RE-VITAL COMPLEX. Restructuring multivitamin complex (A+C+E) that stimulates cell regeneration. Recommended for the treatment of skin with wrinkles, age spots and flaccidity.

Presentation: Box containing 1 Vitamin C Plus: 0.23 U.S. fl. oz. (1 x 0.23 U.S. fl. oz.) - 7 ml (1 x 7 ml) vial and 2 Vitamin A pure: 0.46 U.S. fl. oz. (2 x 0.23 U.S. fl. oz.) - 14 ml (2 x 7 ml) vials

RE-VITAL CREAM. Cream containing Vitamin A that visibly reduces wrinkles within 8 to 12 weeks. It contains pure Vitamin A (retinol) encapsulated in Glycospheres, Vitamins B, C and E, Reductine ® (anti-wrinkle active obtained from Oat), Mallow, Fucose Gel, Shea Butter and Sun Filter. Recommended for skin that is fine, aged with wrinkles, flaccid, very dry, keratinised, rough or with skin marks.

Presentation: 1.8 oz. - 50 ml jar and 5.3 oz. - 150 ml tube

NATURDERMIE RE-VITAL. Hydro-plastic mask (See page 5)



NATURAL WHITE LINE

LIGHTENING TREATMENT

When exposure to the sun is intense, a defence mechanism is produced which consists in protecting the skin from excessive solar radiation by forming MELANIN pigment.

The efficient combination of active agents found in NATURAL WHITE, enable acting on all levels of melanin production, preventing darkening of the skin and the formation of dark spots caused by exposure to the sun, skin ageing, hormonal factors (pregnancy), hereditary factors, etc.

■ NATURAL WHITE LINE COMPOSITION

NATURAL WHITE LIMPIADOR + TÓNICO (CLEANSER & TONER). Two in one gel that cleanses and tones the skin, leaving it hydrated and fresh. It contains lightening, smoothing and refreshing plant extracts: Chamomile, Liquorice, Mulberry and Wheat Germ (that contains Glutathione, an amino acid that deflects the production of melanin towards the lighter and less noticeable melanin: pheomelanin). Presentation: 7 oz. - 200 ml tube

NATURAL WHITE CREMA (CREAM). Protective day cream that lightens the skin and helps to prevent its darkening and the appearance of brown marks. It contains competitive Amino acids, Kojic Acid, Alpha-hydroxyacids (Citric, Lactic, Tartaric and Malic), Glutathione, Green Tea Extract and Sun Filters (SPF 16). Presentation: 1.8 oz. - 50 ml airless flask

NATURAL WHITE SERUM. Serum with Vitamin C and vegetable extracts of Bearberry, Camomile, Liquorice, Mulberry, Wheat Germ (rich in Glutathione) and a Cellular Oxygenating Complex. The ingredients it contains work in a synergistic way with those of the cream; therefore, the use of both products is recommended to obtain a maximum effect. Presentation: 1 fl. oz. - 30 ml airless flask

NATURAL WHITE MASCARILLA (MASK). Lightening and moisturizing mask with Vitamin C, that provides skin with luminosity and freshness. It contains Glutathione and Camomile, Liquorice and Mulberry extracts. Presentation: 7 oz. - 200 ml tube

NATURAL WHITE ESPECIAL MANCHAS (SPECIAL SKIN BLEMISHES). A product for specific application on dark marks of the skin. Besides of a high sun protection factor (SPF 25) it contains substances that inhibit melanin production: Kojic Acid, Bearberry extract, Mulberry extract and Competitive Amino acids. Citric acid and Salicylic acid enhance the absorption of the whitening ingredients. Presentation: 0.5 oz. - 15 ml airless flask



TOP CELL LINE

TREATMENT FOR THE FIRST SIGNS OF AGEING (mature skin)

In our present culture, wrinkles are associated with the decadence of old age and are one of the most important aesthetic problems. TOP CELL line includes ARGIRELINE® (in some products), that obtains the benefits of BOTOX (Botulinum toxin), but without its adverse effects, achieving to reduce the depth of wrinkles caused by muscular contraction, SOY ISOFLAVONES that counter the effects that appear on the skin due to the lack of estrogens and CYTOKINES that encourage cellular regeneration.

■ TOP CELL LINE COMPOSITION

TOP CELL CARESS. A cream for dehydrated skins showing signs of ageing. It contains Isoflavones, Cytokines, Ceramides, Reductine®, Panthenol, Vitamin E, Hyaluronic acid, Fucose gel and sun protection (10).

Presentation: 1.8 oz. - 50 ml jar.

TOP CELL EXCELSS. A cream for alipic dry skins showing signs of ageing. It contains Isoflavones, Cytokines, Ceramides, Reductine®, Structurine®, Jojoba and Rose Hips Oils, Shea Butter, Panthenol, Vitamin E and sun protection (10). Presentation: 1.8 oz. - 50 ml jar.

TOP CELL VELVESS. Special cream for the eye and lip contour and forehead wrinkles. It contains Argireline®, Isoflavones, Cytokines, Ceramides, Reductine®, Witch Hazel extract, Panthenol, Vitamin E and sun protection (10). Presentation: 1 oz. - 30 ml dispensing flask

TOP CELL CITOLINE. Repairing and moisturizing serum, oil free, for skin showing signs of ageing. It contains Argireline®, Isoflavones, Cytokines, Ceramides, Reductine®, Rose Hips oil, Silk Proteins, Fucose gel, Panthenol, Vitamin E and sun protection (10). Presentation: 4.2 U.S. fl.oz. - 125 ml flask and 1 U.S. fl.oz. - 30 ml dispensing flask

TOP CELL CLEANSER. Cleansing, surfactant-free, bi-gel for all skin types, even the most sensitive. It contains Soy Isoflavones. Presentation: 7 oz - 200 ml dispensing flask.

TOP CELL MASK. A moisturizing, repairing and lifting mask, that smoothes skin surface. It contains Kigelia Africana, rich in proteins that provide an immediate lifting effect, Quillaja saponaria which avoids liquid retention and moisturizes in depth and Fagus sylvatica (beech tree) or the ever-lasting youth tree that has a powerful regenerating action. Presentation: Bag with one unit for face and neck

TOP CELL BIO REPLENISH. Concentrate for skins showing signs of ageing. It contains Argireline®, Isoflavones, Cytokines, Ceramides and Reductine®. Presentation: Box of 2 U.S. fl.oz. (20 x 0.1 U.S. fl.oz.) - 60 ml (20 x 3 ml) ampoules.



OXYGEN LINE

TREATMENT FOR PREMATURELY AGED DEHYDRATED AND/OR ASPHYXIATED SKIN

Like our body needs oxygen to live, the skin needs to be oxygenated to keep its glow and smoothness. The OXYGEN line offers an exclusive treatment to encourage oxygenation of the face, activate cell life and stimulate their regeneration and purification in prematurely aged, dehydrated and/or asphyxiated skin.

■ OXYGEN LINE COMPOSITION

OXY-HYDROGEN. A cream for combination-dry skin that is dehydrated and/or asphyxiated. It contains Cellular Oxygenating Complex, Carbohydrates, Collagen Lipopeptide and sun filter (10).

Presentation: 5.3 oz. - 150 ml tube and 1.8 oz. - 50 ml jar

OXY-NUTRIGEN. A redensifying cream for skin that is devitalized dehydrated and/or asphyxiated. It contains Cellular Oxygenating Complex, Carbohydrates, Collagen Lipopeptide and Rice Extract and sun filter (10).

Presentation: 5.3 oz. - 150 ml tube and 1.8 oz. - 50 ml jar

BIO NUIT. Oxygenating and moisturizing serum for dehydrated and/or asphyxiated skin. It contains Cellular Oxygenating Complex, Carbohydrates, Collagen Lipopeptide and Rice Extract.

Presentation: 1 U.S. fl. oz. - 30 ml dispensing flask

EYE SERUM. Eye contour treatment, which reduces the appearance of dark under eye circles and wrinkles. It contains Cellular Oxygenating Complex, Carbohydrates and Haloxyl®.

Presentation: 1 oz. - 30 ml dispensing flask.

OXYGEN MASK. Regenerating, oxygenating and free-radical scavenger mask for devitalized dehydrated and/or asphyxiated skin. It contains Ulva Lactuca seaweed, which improves skin's elasticity, Monostroma seaweed that has an oxygenating effect and SPD, a marine molecule with exceptional anti-free radical properties.

Presentation: Bag with one unit for face and neck.

BIO OXYGEN. Moisturizing, oxygenating and regenerating emulsion. It contains Oxygenating Complex, Carbohydrates, Collagen Lipopeptide and Rice Extract.

Presentation: Box of 2 U.S. fl.oz. (20 x 0.1 U.S. fl.oz.) - 60 ml (20 x 3 ml) ampoules.



VIVRECEL LINE

TREATMENT FOR FATIGUED / STRESSED SKIN. "LIFTING"

In case of limit situations as when having much stress, skin loses its own ability of regeneration, luminosity and vitality. VIVRECEL line includes: PLANT FRESH CELLS a cocktail of fruit cells which furnish vitality, cellular stimulation and hydration. The selected fruits are: KIWI, that inhibits up to 53% the free radicals, MANGO, that inhibits hyaluronidase, an enzyme that causes cutaneous ageing and STRAWBERRY that tones and stimulates fatigued skin.

It also includes a new multi-mineral chrono-energiser, CM3, an original association of Zinc, Copper and Magnesium that supplies the necessary elements for cell vigour and for the maintenance of skin functions. It stimulates cell turnover, restoring the skin's vitality and freshness.

■ VIVRECEL LINE COMPOSITION

All the products of this line contain Fresh Cells of Kiwi, Mango and Strawberry and CM3, the multimineral chrono-energiser, besides of the ingredients that are mentioned here below for each one:

VIVRECEL HYDRALIFE. 24 hours moisturising and energising cream with Coenzyme Q10, Honey micro sponges, Vitamin E, Panthenol, Fucose Gel, Squalane and Sun Filter. SPF 10. Presentation: 5.3 oz. - 150 ml tube and 1.8 oz. - 50 ml jar

VIVRECEL ACTILIFT. Energising and firming cream with Coenzyme Q10, Shea Butter, Polylift®, Raffermine®, Marine Elastin, Grape Extract and Sun Filter. SPF 10. Presentation: 1.8 oz. - 50 ml jar

VIVRECEL LIFT CONTOUR. Energising, firming and eyebags reducing gel cream for the eye and lip contour. It contains Coenzyme Q10, Marine Elastin, Caffeine and Organic Silicon Derivative, Polylift®, Squalane, Fucose gel. Fragrance free. Presentation: 2.6 oz. - 75 ml tube and 1 oz - 30 ml dispensing flask

VIVRECEL LIFT SERUM. Energising and firming serum with Coenzyme Q10, Vitamin E, Panthenol, Polylift®, Raffermine®, Fucose Gel and Squalane. Presentation: 1 U.S.fl.oz. - 30 ml dispensing flask.

VIVRECEL LIFT MASQUE. Tensing and firming gel. It contains Panthenol, Polylift®, Caffeine and Organic Silicon Derivative and Moisturising Actives. Presentation: 5.3 oz. - 150 ml and 2.6 oz. - 75 ml tubes

VIVRECEL AQUA LIFT. Vitalising and tensing water with a luminous effect. It helps to set make-up and enhances the lifting effect of the cream.

It contains Polylift®, Witch Hazel, Organic Silicon Derivative and Illuminating Particles of Mica. Presentation: 5.1 U.S. fl.oz. - 150 ml mist-spray flask.

BIO VIVRECEL LIFT. Revitalizing, firming and lifting concentrate. It contains Coenzyme Q10, Polilift®, Raffermine® and Organic Silicon Derivate. Presentation: Box of 2 U.S. fl.oz. (20 x 0.1 U.S. fl.oz.) - 60 ml (20 x 3 ml) ampoules.



GLYCOFRUIT LINE

CELLULAR RENEWAL

With increasing age and sun exposure, dead cells tend to accumulate on the skin surface
Cell renewal slows down. The skin surface becomes irregular and wrinkles accentuate.

GLYCOFRUIT line proposes two different alternatives to remove dead cells and boost skin renewal:

- 1) With ingredients that break the links among stratum corneum dead cells, enabling their sloughing off: plant origin Alpha-hydroxyacids (AHA) and Beta-hydroxyacids (BHA): glycolic, lactic, citric, malic, tartaric, mandelic and salicylic acids; Exfolactive®, a Nopal cactus flower extract that boosts the activity of the skin's own enzymes that are involved in the natural desquamation process.
- 2) With fruit enzymes, as papain, that dissolves stratum corneum dead cells.

■ GLYCOFRUIT LINE COMPOSITION

GLYCOFRUIT RENOVA. Hydro-nourishing renewing cream, that is suitable for dry skin and for combination skin that tends to be dry. It contains a complex of 5 botanical extracts (Bilberry, Orange, Lemon, Sugar Cane and Sugar Maple) rich in natural AHA (Glycolic, Lactic, Citric, Malic and Tartaric), Exfolactive®, Structurine® (White lupine extract that favours the synthesis of epidermal lipids and proteins, thus improving the cohesion of new cells), Carbohydrates, Shea Butter, Vitamin E and sun protection (15). Presentation: 5.3 oz. - 150 ml tube and 1.8 oz. - 50 ml jar

GLYCOFRUIT SERACTIF. All skin type serum. Moisturizes dry skin and reduces the shiny appearance of oily skin. It contains a complex of 5 botanical extracts rich in natural AHA, Mandelic Acid (AHA), Salicylic Acid (BHA), Mucopolysaccharides and Carbohydrates. Presentation: 4.2 U.S. fl.oz. - 125 ml flask and 1 U.S. fl.oz. - 30 ml dispensing flask

GLYCOFRUIT BODYSILK. Renewing and moisturizing body cream. It contains a complex of 5 botanical extracts rich in natural AHA, Shea Butter, N.M.F., Urea and Allantoin. Presentation: 7 oz. - 200 ml tube

GLYCOFRUIT SOFT 2. Professional use exfoliating solution with Mandelic Acid (AHA obtained from almonds with peeling, antibacterial and lightening properties and with a very low irritation potential). It is very well tolerated on sensitive skins, even on rosacea-prone skin. It is recommended for prone-to acne skins due to its antiseptic effect, for blemished skin and for dark phototype skins.
Presentation: Box of 1.4 U.S. fl.oz. (20 x 0.07 U.S. fl.oz.) - 40 ml (20 x 2 ml) ampoules.

GLYCOFRUIT MEDIUM 3 and FORTE 5. Professional use exfoliating solutions with different concentrations of AHA (glycolic, lactic, citric, malic and mandelic acids). They reduce the thickness of the stratum corneum, removing dead and pigmented cells, moisturize the skin and stimulate the formation of collagen and new cells.
Medium 3: for all skin types (except for those that are very fine and sensitive or intolerant to AHA) and particularly in the first sessions of AHA treatments.
Forte 5: for skins that are thick, very pigmented or keratinized.
Presentation: Box of 1.4 U.S. fl.oz. (20 x 0.07 U.S. fl.oz.) - 40 ml (20 x 2 ml) ampoules.

GLYCOFRUIT PAPAYA POWDER & ENZYME LOTION. Professional use Enzymatic peeling to dissolve stratum corneum dead cells. It can be used on all skin types even on those that are sensitive or intolerant to AHA. Softens the skin surface, smoothes the wrinkles, lightens the blemishes and eases blackheads extraction. To prepare it, it is necessary to mix PAPAYA POWDER with ENZYME LOTION. It contains a concentrated extract of papaya juice rich in papain, Exfolactive® and Aloe Vera. Presentation: 5.3 oz. - 150 g pot of PAPAYA POWDER (enzymatic renewing powder) and 8.5 U.S. fl. oz. - 250 ml flask of ENZYME LOTION (enzymatic renewing lotion)



ONLY MEN LINE

MAN'S SKIN CARE AND COMFORT

As a result of his change of mentality, current man gives more and more importance to his physical appearance. Man tries to feel better with himself and with the image he reflects on the rest of people, learning to consider the advantages of having a young and attractive look. This leads us to create a new space in cosmetic "only for men".

Man's skin is about 24% thicker than women's, with higher concentrations of collagen, elastin and water that keep it firm and elastic for longer but, when ageing skin signs and flaccidity appear, the process becomes faster and more aggressive than in women.

Men's Cosmetic line "ONLY MEN" of BELNATUR is based on the power, strength and vital energy provided by trees like Baobab, Beech, called "the ever-lasting youth tree", Tepezcohuite, called "the skin tree" and White Willow. It suits men perfectly because it is focused on the specific exigencies of man's skin, with fluid and light textures easy to apply. It provides a moisturising and regenerating action, firmness, flexibility, luminosity and comfort, without leaving a greasy after feel on the skin.



■ ONLY MEN LINE COMPOSITION

AFTER SHAVE COMFORT. Refreshing gel that soothes the irritations caused by shaving. It helps to reinforce the skin's natural defence system. It contains White Willow, Tepezcohuite, Cucumber and Witch Hazel extracts, Aloe Vera and Panthenol. ALCOHOL FREE.

Presentation: 5.3 oz. - 150 ml tube

ENERGY FLUID. Light, non-greasy, regenerating and moisturizing fluid that recharges the skin with energy. It corrects signs of skin fatigue and expression lines, delaying the skin ageing process. It contains White Willow, Beech Tree Buds, Tepezcohuite, Baobab and Burdock extracts, Aloe Vera, Vitamin C and E, Panthenol and Energizing Mineral Complex.

Presentation: 2.6 oz. - 75 ml tube

EYE CONTOUR COMFORT. Moisturizing anti- fatigue eye contour gel cream. It reduces the visible signs of tiredness, prevents dark circles and bags with a draining effect. It reduces expression lines. It contains White Willow, Beech tree buds, Tepezcohuite, Baobab, Cucumber and Witch Hazel extracts, Aloe Vera, Argireline®, Haloxyl®, Caffeine and Organic Silicon Derivative, Vitamin E and Panthenol.

Presentation: 0.5 oz. - 15 ml dispensing flask

FLASH LIFT-REPAIR. Repairing and firming serum with an immediate lifting action. It corrects the signs of skin ageing, fatigue and cutaneous stress. It provides firmness, elasticity and luminosity. It contains White Willow, Tepezcohuite, Baobab and Witch Hazel extracts, Aloe Vera, Vitamin C and Panthenol.

Presentation: 0.5 U.S. fl.oz. - 15 ml dispensing flask



PRIVILÈGE LINE

A LUXURY TREATMENT

A "PRIVILÈGE" FOR THE SENSES

The first more obvious signs of cutaneous ageing appear as years go by: wrinkles, expression lines, lack of vitality and natural nutrients, as well as dark spots typical for mature skins.

PRIVILÈGE fights against the signs of ageing thanks to a luxurious cocktail of beauty that combines the most exquisite active ingredients:

MOTHER-OF-PEARL: A CONTRIBUTION OF YOUTH
WHITE ORCHID: A MORE LIVELY IMAGE
CHAMPAGNE : SUBLIME PROTECTION
RUBY: A RENEWED SKIN



■ PRIVILÈGE LINE COMPOSITION

PRIVILÈGE VISAGE - SPF 12. Anti-wrinkles, regenerating and moisturizing cream that gives the youth and brightness back to mature skins. **Visible wrinkle reduction of 65%(*).** Presentation: 1.8 oz. - 50 ml jar.

PRIVILÈGE CONTOUR. Repairing and moisturizing cream with a delicate texture for eyes and lips contour. It gives a younger look back. Presentation: 1 oz. - 30 ml jar.

PRIVILÈGE PROFESSIONAL PACK 6 SESSIONS. Pack of luxury treatment to treat the most obvious signs of cutaneous aging. It contains:

- NETTOYANT INTENSIF: Cleansing Bi-gel rich in White Orchid.
- EXFOLIANT PEARL VISAGE: Exfoliating gel with natural micro particles of Mother-of-pearl and glycolic acid.
- CONCENTRÉ INTENSIF: Activating solution to apply to the Masque Exclusif. It incorporates a high content of Vitamin C, White Orchid and Champagne extract.
- EMULSION VISAGE: Anti-wrinkles, repairing and moisturizing light emulsion that gives the youth and brightness back to mature skins.
- MASQUE EXCLUSIF: Mask made of highly concentrated native collagen pure fibers. Easy to apply to the skin.

Presentation: Box of 6 u. Nettoyant Intensif 4ml e 0.14 fl. oz. / 6 u. Exfoliant Pearl Visage 4ml e 0.14 fl. oz.
6 u. Concentré Intensif 10 ml e 0.35 fl. oz. / 6 u. Emulsion Visage 4ml e 0.14 fl. oz. / 6 u. Masque Exclusif

(*) Efficacy Test endorsed by doctors of
Derma Consult GmbH Bonn (GERMANY).
20 women (38-61 years old) during 4 weeks.



■ COMPOSITION OF ALGA SUN LINE

ALGA SUN HUILE 2. Concentrate of natural oils of Coconut, Carrot, Green Nut, Soy, Calendula and Ivy. Specially indicated for skin that's used to sun exposure.

Presentation: 8.5 U.S. fl. oz. - 250 spray flask

ALGA SUN LAIT 15. Protective emulsion with Vitamins, "Thermo-defence" and Jasmine Flavonoids, that have a repairing action. Water resistant.

Presentation: 8.5 U.S. fl.oz. - 250 ml spray flask

ALGA SUN LAIT 30. Protective emulsion, with Vitamins, that is ideal for children. Contains "Thermo-defence" and Jasmine Flavonoids. Water resistant.

Presentation: 8.5 U.S. fl.oz. - 250 ml spray flask

ALGA SUN DNA REPAIR 25. Repair cream that prevents premature ageing. Contains "Thermo-defence" that reinforces skin's defences, Jasmine bioflavonoids, that protect cellular DNA and Vitamins. Water resistant.

Presentation: 1.8 oz. - 50 ml tube

ALGA SUN MAX PROTECTION 50⁺. Repairing emulsion for all skin types, even for sun intolerant skin. Easy to apply, non-greasy touch, non-sticky effect. Prevents premature photo-ageing, thanks to the presence of Jasmine bioflavonoids that protect cellular DNA. Contains "Thermo-defence" and Vitamins. Water resistant. Doesn't leave white marks on the skin.

Presentation: 7 oz. - 200 ml flask

ALGA SUN BALSAM. Moisturising and refreshing after sun emulsion containing Aloe Vera, Collagen and Vitamins. It helps to repair sun damage.

Presentation: 7 oz. - 200 ml flask

ALGA SUN GOLDEN TAN "treatment self-tanner". Repairing and moisturizing emulsion that provides a gradual golden tanned look without sun exposure. Contains a new generation DHA, that provides a faster, even and long-lasting tan without drying the skin and without leaving marks.

It includes moisturising and anti-age ingredients that keep the skin hydrated and resilient, and golden reflections that provide and immediate glow.

8.5 U.S. fl.oz. - 250 ml flask

ACTIV UVA. Fluid gel specially created for UVA solariums to stimulate melanin formation and allow a faster, more uniform tan. Contains a Tan Activating Complex with Tyrosine and sweet orange Flavonoids, Vitamins E and B5 and moisturising actives.

Presentation: 7 oz - 200 ml flask and box of 15 oz (50 x 0.3 oz) - 500 ml (50 x 10 ml) sachets

DUO SUN 6 and DUO SUN 20. Two-phase tanning lotions for face and body. They encourage a deep sun tan while protecting against UVA and UVB radiation+. Water resistant. Fragrance free.

Presentation: 7oz - 200 ml spray flask





Repair & Protection
& Vitamins



With “Thermo-defence” and
“Jasmine flavonoids”

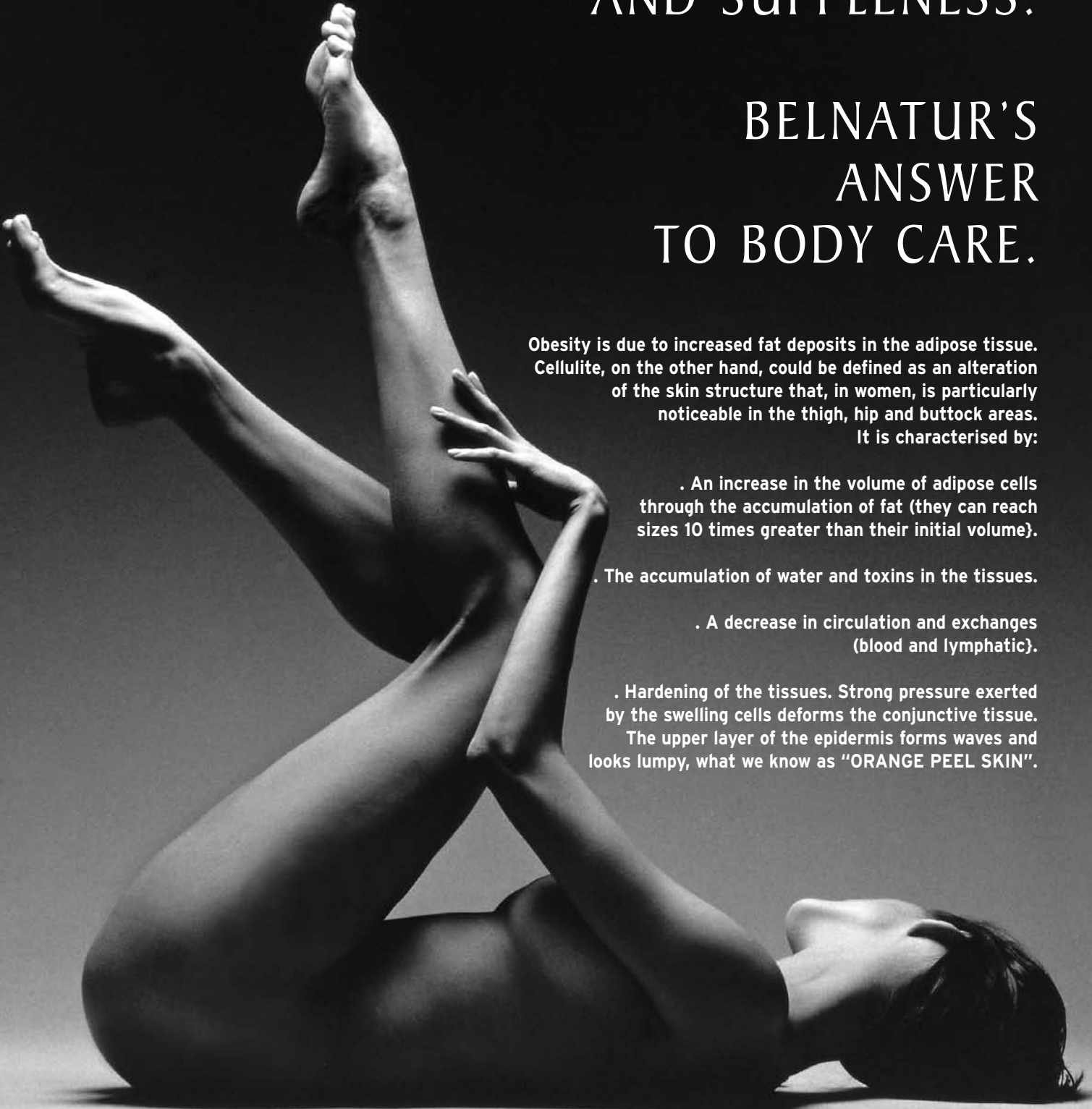
Protection adapted to the new European legislation
concerning UVA and UVB filters.

TREATING CELLULITE,
TONING THE TISSUES,
RESTORING THE
SKIN'S FIRMNESS
AND SUPPLENESS.

BELNATUR'S
ANSWER
TO BODY CARE.

Obesity is due to increased fat deposits in the adipose tissue. Cellulite, on the other hand, could be defined as an alteration of the skin structure that, in women, is particularly noticeable in the thigh, hip and buttock areas. It is characterised by:

- . An increase in the volume of adipose cells through the accumulation of fat (they can reach sizes 10 times greater than their initial volume).
- . The accumulation of water and toxins in the tissues.
- . A decrease in circulation and exchanges (blood and lymphatic).
- . Hardening of the tissues. Strong pressure exerted by the swelling cells deforms the conjunctive tissue. The upper layer of the epidermis forms waves and looks lumpy, what we know as "ORANGE PEEL SKIN".



1 MODELLING LINE: BODYCELL

Cellulite is characterized by the presence of visible and palpable nodules on the surface of the skin. It appears as a result of an excessive accumulation of fat in the adipose tissue of the hypodermis and deficiencies in the circulatory system that cause water and toxins retention.

The best results against cellulite arise from the combination of the more effective active ingredients. "BODYCELL" incorporates innovative actives, specially designed to reduce fat accumulations, to prevent their reinstallation and to provide more firmness

BODYCELL SMOOTHES THE SKIN AND REMODELS BODY CONTOURS ACHIEVING A SLENDERER FIGURE

■ BODYCELL LINE COMPOSITION

BODYCELL CHRONO-SCULPTOR. Day/night body gel. Double action: day time "combustion", night-time "anti-storage". Contains Sacred Lotus Flower, Horse chestnut, Butcher's Broom, Uncaria tomentosa, Coleus forskohlii and Arnica extracts, Caffeine, L-Carnitine, Genistein, Anti-glycation Proteins and Organic Silicon.

Presentación: Frasco de 200 ml con bomba dosificadora

BODYCELL SVELTHERM. Thermo-active body cream for a localized application.

It contains Sacred Lotus Flower, Horse chestnut, Butcher's Broom, Coleus forskohlii and Uncaria tomentosa extracts, Caffeine, L-Carnitine, Genistein, Anti-glycation Proteins, Organic Silicon and Cinnamon and Rosemary essential oils. Presentation: 7 oz. - 200 ml dispensing flask

BODYCELL MODELING. Gel for the cutaneous inestetisms of cellulite. Contains Sacred Lotus Flower, Horse chestnut, Butcher's Broom and Coleus forskohlii extracts, Caffeine, L-Carnitine, Genistein, Anti-glycation Proteins and Organic Silicon. Presentation: 17.6 oz. - 500 ml dispensing jar (PROFESSIONAL USE ONLY)

BODYCELL SVELTIA. Reducing draining cream. Contains Sacred Lotus Flower, Horse chestnut, Butcher's Broom, Coleus forskohlii and Ivy extracts, Genistein, L-Carnitine and Caffeine.

Presentation: 17.6 oz. - 500 ml dispensing jar (PROFESSIONAL USE ONLY)

BODYCELL INTENSIV. Concentrated solution for the cutaneous inestetisms of cellulite. Contains Sacred Lotus Flower, Horse chestnut, Butcher's Broom and Arnica extracts, L-Carnitine, Anti-glycation Proteins and Organic Silicon. Presentation: Box of 3 U.S. fl. oz. (10 x 0.3 U.S. fl. oz.) - 100 ml (10 x10 ml) ampoules. (PROFESSIONAL USE ONLY)

BODYCELL GINGER MOUSSE. Spices self-heating reducing body wrapping. It contains Marine salt, Cinnamon, Ginger and Guarana. Presentation: 52.9 oz. (3lb. 4.9 oz.) - 1500 g bucket (PROFESSIONAL USE ONLY)



3 FIRMING LINE: BODYTENS and 9 ANTI-STRETCH MARKS

The passage of time, the stress and the environmental pollution give place to structural changes in all cutaneous layers that lead to a loss of elasticity and a decrease in the skin tone and firmness.

BODYTENS is a body firming line with the following objectives:

- Regenerate and redensify the skin
- Increase the production of structural and functional components of the skin (collagen, elastin, glycosaminoglycans,..)
- Strengthen the dermal-epidermal junction
- Moisturize the skin
- Protect the integrity of the elastic and support proteins

■ BODYTENS LINE COMPOSITION

BODYTENS CREAM. Body cream that improves the firmness and elasticity of the body and bust skin. It contains Fibro-activ, Raffermine®, Adhesine, Organic Silicon and Grape Polyphenols.

Presentation: 17.6 oz. - 500 ml jar and 7 oz. - 200 ml tube.

BODYTENS GEL. Body gel that improves the firmness and elasticity of the body and bust skin. It contains Fibro-activ, Raffermine®, Adhesine, Organic Silicon and Grape Polyphenols.

Presentation: 17.6 oz. - 500 ml jar and 7 oz. - 200 ml tube.

BODYTENS BUST. Fluid and silky gel special for the breast care that is firming, redensifying, lifting and with "VOLUME" effect. It contains Raffermine®, Fitrogen complex, Polylift® and Lipofill.

Presentation: 1.8 oz. - 50 ml dispensing flask

BODYTENS BUSTILIFT. Redensifying, firming and lifting mask for the breast care. It moisturizes the upper skin layers providing elasticity and firmness. It contains Milk and Soy proteins and Kudzu extract (very rich in Isoflavones). Presentation: Bag with two pieces for one application (PROFESSIONAL USE)

BODYTENS FRI ALGA. Cryogenic, firming and reducing lotion for "cold strips" treatments. It contains Algae, Indian Pennywort, Ivy and Arnica vegetable extracts, Organic Silicon and Mineral salts.

Presentation: 16.9 U.S. fl.oz. - 500 ml flask (PROFESSIONAL USE)

BODYTENS MASK. Hydro-plastic mask that is recommended in body firming treatments and to alleviate heavy legs. Contains: Indian Pennywort, Acerola and Horse chestnut extracts, Grape Polyphenols, Sage and Lemon essential oils and Mint leaves. Presentation: 35.2 oz - 1000 g bucket (PROFESSIONAL USE)

BODYTENS EXTRACT. Firming concentrate for the body and bust care.

Contains: Fibro-activ, Adhesine, Raffermine®, Organic Silicon, Soy Proteins and Sage and Lemon essential oils

Presentation: Box of 3 U.S. fl. oz. (10 x 0.3 U.S. fl. oz.) - 100 ml (10 x 10 ml) ampoules. (PROFESSIONAL USE)



■ ANTI-STRETCH MARKS

ALGALASTIN. Body-care cream particularly recommended for preventing the formation of stretch marks during pregnancy. Moisturises, nourishes and softens the skin, keeping it flexible and supple. Contains Laminaria Seaweed Extract, Horsetail, Centella Asiatica and Yeast Plant Extracts, Marine origin Elastin and Collagen, Soy Proteins and Wheat Germ Oil.

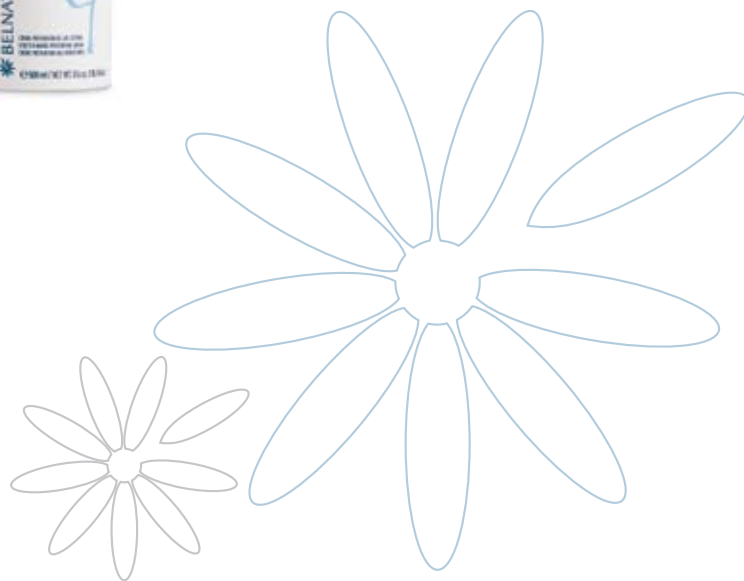
Presentation: 17.6 oz. - 500 ml jar and 7 oz. - 200 ml tube

■ Other products for body firming

ESENCIA ORO.

Essential oils

(See page 34)



4 SPA LINE

In 1326, in Belgian town SPA, which has been famous for the healing properties of its hot spring water, the first hot spring centre was built.

With the passing of time, other hot spring centres were called SPAs after the name of this town. Today, most Spa establishments operate on the basis of a preventive medicine philosophy and offer an infinite range of revitalising activities, beauty treatments, anti-stress therapies, thalassotherapy, balneotherapy, hydrotherapy, seaweed baths, mud baths, oxygenation and aromatherapy.

Nowadays, many beauticians consider hydrotherapy and treatments performed in Spas to be an ideal complement for their own treatments.

■ FANGOTHERAPY

MUD is formed at the bottom of the sea or lakes and is amazingly rich in minerals and oligo-elements. It revitalises and reinforces the skin's elasticity, reduces flaccidity and is effective in anti-cellulite and stretch mark treatments.

It deep cleanses and oxygenates the skin by absorbing dead cells and impurities deposited in the epidermis. Also it has antiseptic, decongestive, astringent and drying properties that are ideal for treating acne.

LIMOS (SEA MUD). A 100 % natural blend of Laminaria digitata Seaweed, Marine Sediments and Sea Salt. This very fine powder immediately releases the active ingredients it contains. Limos combines the slimming and toning features of seaweed, the heat-retaining effect of calcium and magnesium salts from the marine sediments and the detoxifying and draining effects of sea salt.

Presentation: 52.9 oz. -1500 g bucket

BLACK MUD (DEAD SEA MUD). Ready for use, thermo-active mud based on Dead Sea Mud, very rich in minerals like sodium, potassium, magnesium, calcium, iron and sulphur, all of which have beneficial effects on the body. It also contains Benzyl Nicotinate, responsible of the warmth effect, Horse Chestnut extract that enhances blood circulation, and vitamin E. Black Mud is ideal for cellulite and toning treatments and to relieve joints and muscular pain.

Presentation: : 106 oz. (3000 g) - 1700 ml buckets

BLACK MASK. Revitalising mask for all skin types containing black mud from the Dead Sea. Recommended for flaccid, limp, lifeless skin oily skin.

Presentation: 8.8 oz. (250 g) - 200 ml jar

GAIAMAR. Ready for use fossil mud with remineralising and rebalancing properties for deep cleansing of the skin. It is also recommended for psoriasis, dermatitis, eczema, acne, scalp seborrhoea, flaccidity, skin marks and cellulite. Do not apply to sensitive, irritated or damaged skin.

Presentation: 106 oz. (3000 g) - 1700 ml buckets



■ ALGOTHERAPY

SEAWEED is a rootless plant whose composition is very similar to blood plasma. It provides excellent results in tissue reconstruction, it stimulates cellular vitality, it improves circulation, it delays the onset of wrinkles, it purifies and balances the skin and it encourages the elimination of fat and toxins.

ALGAS MICROESTALLADAS (MICROBURST SEAWEED). Brown seaweed (Fucus Vesiculosus) selected from the Brittany coasts and micronised to release all of its cellular content: minerals, oligoelements, enzymes, vitamins, amino acids and glucides.

BALNEOTHERAPY applications: the relaxing effects of a bath are supplemented by the vitamin and ionic properties of seaweed, which balance the functions of the skin and the organism.

PLASTER THERAPY applications: slimming, anti-cellulite, detoxicating and revitalising treatments of the skin, which it also nourishes and tones.

Presentation: 52.9 oz. - 1500 g bucket

COVERALGA (SEAWEED PARAFANGO). Thermo-active covering made from seaweed, marine sediments and paraffin. Very effective for anti-cellulite and slimming treatments. When applied it creates a mini-sauna effect that:

- Optimises the penetration of previously applied products.
- Encourages sweating and the elimination of toxins.
- Improves the skin's hydration and softness.

Presentation: 16 oz. - 500 ml metal tin and 16 oz. - 500ml plastic bag

BIO ALGA. Laminaria Seaweed concentrate. Non-greasy body massages lotion with toning, fat-reducing and anti-cellulite properties. Encourages the elimination of retained fluids and activates fat burning.

Presentation: 16.9 U.S. fl. oz. - 500 ml flask

GEL ALGA. Gel made from Seaweed, used for slimming treatments to increase sweating and to prepare, revitalise and balance the skin in order to improve the results of different treatments. Conductive gel.

Presentation: 17.6 oz. - 500 ml flask

ALGACREM. Massage cream for use in figure-modelling and slimming treatments thanks to its Fucus Seaweed and Ivy content. For people with iodine intolerance we recommend the use of Gluco.Cell Cream for massage.

Presentation: 35.3 oz. - 1000 ml jar

TERM ALGA. Reducing Seaweed-based lotion specially created for "HOT WRAPS". Contains Seaweed and Ivy, Birch and Horsetail Vegetable Extracts.

Presentation: 16.9 U.S. fl. oz. - 500 ml flask



■ OTHER SPA LINE PRODUCTS

XOCOLATL. Cocoa and Guarana self-heating body wrapping, in an Oat base, with relaxing, nourishing, antioxidant and body modelling effects. It is a very fine powder that, once mixed with water, turns into a foamy and effervescent paste that heats itself progressively. Its original texture and the heating effect provide a pleasant feeling of comfort from the very first moment of its application.

Presentation: 52.9 oz. -1500 g bucket

SUGAR PAPAYA SCRUB. Body peeling with mechanical and enzymatic action. It removes dead skin cells and impurities, moisturizes and nourishes the skin leaving it with a soft and silky touch. It contains Sugar cane and marine Salt crystals, Papaya juice, rich in papain, nourishing oils of Jojoba, Avocado and Green Tea and vitalizing and refreshing essential oils of Grapefruit and Mint.

Presentation: 35.3 oz. - 800 ml (1000g) bucket and 12 x (50 ml -1.8 oz.) box

MASS-OIL. Special massage oil made from neutral and light oils that are dry to the touch. It makes massage easier and gives the skin a non-greasy, silky feel.

The high content of Rosemary Essential Oil gives this preparation toning, antiseptic and deodorant properties.

Presentation: 16.9 U.S. fl. oz. - 500 ml flask

ESSENTIAL OILS. A range of several Essentials Oils mixtures for each type of skin, in a hydrophilic form (not oily), that allows a direct application on the skin.

- ESENCIA ROJA (RED ESSENCE). Dry and/or sensitive skin. Contains Geranium, Sandalwood and Lavender Essential Oils that have moisturising, emollient and desensitising properties.

- ESENCIA ORO (GOLD ESSENCE). Flaccid skin. Contains a high concentration of Arnica, Centella asiatica, Horsetail (rich in organic silicon), Horse chestnut, Witch Hazel, Marigold and Aloe Vera Plant Extracts and toning Sage, Cypress and Lemongrass Essential Oils. Can be used to treat both the body and the face.

Presentation: 1.7 U.S. fl. oz. - 50 ml dropper flask



S FATIGUE REDUCING LINE

A sedentary lifestyle and an inadequate diet are the main causes of joint pain and the alteration of body contours. External, cosmetic type solutions for pain alleviation are based on the use of natural substances that help improve the poor oxygenation of tissues.

BELNATUR has formulated a line of Fatigue Reducing Products whose application, through massage, allows soothing the symptoms caused by the fatigue and stress of modern life.

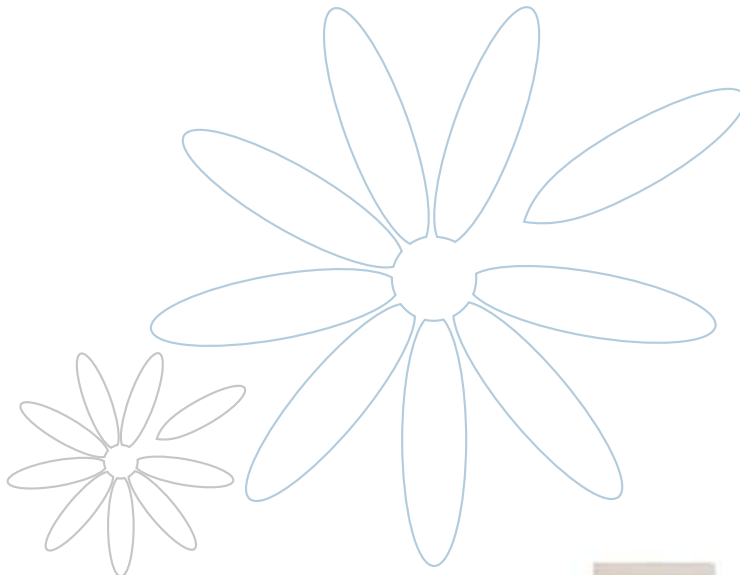
■ FATIGUE REDUCING LINE COMPOSITION

VARIBEL. Body massage cream that softens, moisturises and refreshes the skin. It obtains excellent results when applied on legs or on other tired and painful areas of the body. Contains Arnica, Witch Hazel and Red Grape Extracts, Methyl Salicylate, Menthol and Camphor.

Presentation: 17.6 oz. - 500 ml jar and 7 oz. - 200 ml tube

PODOBEL. A fluid emulsion with relaxing, softening, hydrating, refreshing and deodorant properties, for tired and painful feet. Contains Marine Collagen, Allantoin, Triclosan, Methyl Salicylate and Menthol.

Presentation. 4.4 oz. - 125 ml flask



10 HAIR REMOVAL LINE

Excess hair is one of the most common beauty problems for women. For this reason, women seek fast, lasting and practical systems that guarantee hair disappearance or allow spacing out hair removal sessions. BELNATUR has developed a complete product line that offers various immediate (waxing) or progressive methods to eliminate body hair.

■ HAIR REMOVAL LINE COMPOSITION

PILDERMOL. A progressive hair removing lotion.

Its application helps to:

- Weaken hair and retard its growth, encouraging its disappearance.
- Soothe possible irritation caused by hair removal.
- Soften, protect and refresh the skin.

Its special formula contains plant extracts of Arnica, Willow bark, Witch hazel, Marigold, Camomile, Linden, St. John's Wort, Matricaria and Cornflower, Menthol, Soy Proteins, Urea and Salicylic Acid.

Presentation: Box of 3 U.S. fl. oz. (10 x 0.3 U.S. fl. oz.) - 100 ml (10 x 10 ml) ampoules



BEL-EPIL BODY MILK. Body treatment milk with a double effect:

- Weakens hair and slows its growth.
- Moisturises and cares for the skin.

Presentation: 8.8 oz. - 250 ml flask

BLUE WAX DISCS. Low temperature-hair removing wax discs with a powerful pulling action.

Presentation: 35.3 oz. - 1000 g bag

PINK WAX DISCS. Low temperature-hair removing wax discs with Titanium Dioxide particularly recommended for:

- Sensitive areas (bikini line, underarms and face).
- Sensitive skins.
- Legs suffering from circulation problems.

Presentation: 35.3 oz. - 1000 g bag



NATURAL WAX ROLL-ON. Honey coloured single-use wax in a dispenser with a roll-on applicator.

Presentation: Box of 46.6 oz. (12 x 3.9 oz.) - 12 units of 110 g roll-on



11 BASIC BODY CARE

■ Body moisturising products

SEDADERM CAROTENO. Powerful softening body milk with Wheat Germ and Carrot oil, rich in Vitamins A and E. Acts energetically against dryness and skin keratinisation.

Presentation: 17.6 oz. - 500 ml flask

SEDADERM COLÁGENO. Intensive moisturising body milk containing marine origin Collagen. Collagen is essential for keeping skin in its optimum state of hydration and flexibility. Allows regenerating skin damaged by the sun or the passage of time, leaving it flexible, hydrated and soft.

Presentation: 17.6 oz. - 500 ml flask

GEL ALOE VERA. An Aloe vera gel with moisturizing, softening, refreshing and regenerating properties. It soothes skin irritations due to depilation or to prolonged sun exposure. Recommended for dry and/or irritated skin.

Presentation: 17.6 oz. - 500 ml dispensing flask

■ Hand and nail care cream

CREMA DE MANOS. Protective moisturising cream with Collagen, Elastin, Keratin, Vitamin E and Panthenol, which softens and protects the hands, helping to keep the skin supple and smooth. It promotes nail strength.

Presentation: 2.6 oz. - 75 ml and 7 oz. - 200 ml tubes and display box of 41.2 oz. (16 x 2.6 oz) - 1200 ml (16 x 75 ml) tubes

■ Cleansing and exfoliating gels

DERMIC. A body exfoliating gel, for professional use, which frees the skin from dead cells and impurities, leaving it soft and hydrated thanks to its fine exfoliating particles and gentle cleansing agents.

Presentation: 17.6 oz. - 500 ml flask

PREDERMIC. Shower gel containing exfoliating particles and marine oligoproteins which cleanses skin delicately but in-depth, respecting its pH, vitalizing it and eliminating dead skin cells and impurities to leave it soft and hydrated. Presentation: 7 oz. - 200 ml tube

■ Massage product

CREMA DE MASAJE. Massage cream with a neutral oily base, ideal for extended massaging.

Presentation: 35.3 oz. - 1000 ml jar

■ Contour reducing-conductive gel

FRIGEL. Refreshing and toning gel with reductive effects. Recommended for tired legs.

Presentation: 17.6 oz. - 500 ml jar and 7 oz. - 200 ml tube

■ Thermo-active product

THERMAL. Body foam with warmth effect that it is recommended before any treatment to enhance the absorption and efficiency of active ingredients in anti-cellulite, firming and anti-fatigue treatments. Presentation: 6.8 U.S. fl. oz. - 200 ml foaming flask



DEPIL CARE LINE

SPECIAL LINE FOR APPLICATION WITH "LASER" DEPILATION

■ DEPIL CARE LINE COMPOSITION

DEPIL CARE D-2 ROSE HIPS. A unique mixture of Marine Collagen, Carrot oil and a high concentration of Rose Hips Oil. It is regenerating, healing, moisturizing and nourishing for the skin.

This product is ideal and to be used after every "laser" depilation session. Other indications: psoriasis, extreme dryness.

Presentation: 0.5 U.S. fl.oz. - 15 ml dripper bottle

DEPIL CARE D-3 PROTECTIVE CREAM. Sun protective emulsion (25). Its use is highly recommended after each "laser" depilation session, whenever there is a risk of natural or artificial sunlight exposure.

Presentation: 3.5 oz -100 ml tube

DEPIL CARE D-6 BODILY ROSE HIPS. Regenerating, moisturizing and nourishing body lotion with Rose Hips Oil, Carrot Oil, Chamomile and Mucopolysaccharides. It is ideal to be used after the sessions of body laser depilation.

Presentation: 4.2 U.S. fl.oz. - 125 ml spray flask

DEPIL CARE D-7 DERMAL CONDUCTIVE GEL. Dermal conductive gel to ease the work with aesthetic devices (laser, ultrasounds, passive gymnastics, etc.).

Presentation: 35.3 oz. - 1000 ml bottle



SPECIAL PRODUCTS

■ Customer Sale Packs

OXYGEN. Oxygenating and regenerating treatment for prematurely aged, dehydrated/asphyxiated skin. It is also recommended as a repairing treatment after excessive exposure to the sun.
reparador después de una excesiva exposición al sol.

Presentation: 1- 1 U.S. fl. oz. - 30 ml dispensing flask BIO NUIT
1- 1.8 oz. - 50 ml jar OXY-HYDROGEN



PUR-SKIN. Purifying treatment for oily skin tending towards acne.

Presentation: 1 - 7 oz. - 200 ml tube PUR-SKIN CLEANSER
1 - 1 oz. - 50 ml tube PUR-SKIN CREAM
1 - 2.6 oz. - 75 ml tube PUR-SKIN MASK
1 - 0.5 oz. - 15 ml tube PUR-SKIN COVER



■ Aestheticupuncture device

SOLITENS. A versatile and affordable machine for applying aestheticupuncture. SOLITENS enables the precise location of acupuncture points and their electric stimulation (without using needles or being connected to an electricity supply). Works with two 3 volt batteries. The electro-stimulation provided by the machine can be used through all of the body's meridian points, keeping in mind the advantages and multiple medical effects of ancient Chinese Acupuncture.

Clinical tests show that SOLITENS is biologically active and able to stimulate blood circulation - improving vitality, reducing pain and accelerating tissue regeneration.

The effects of SOLITENS are enhanced with application of the appropriate biological essences and creams in accordance with the treatment being carried out.

SOLITENS is recommended for: Flaccid neck or double chin. Flaccid cheeks. Wrinkles on lips, forehead, eye-brows, eye area. Under-eye bags. General or localised fat. Cellulite. Generalised pain or pain in the joints. Tired legs. Stress. etc.

